



# Stars and Strikes Center

800 LAKE MURRAY BLVD., IRMO, SC 29063



FOR MORE INFORMATION:

**ROX POLLARD**

Vice President & Director of Retail Services Team

803-401-4242

[rox.pollard@colliers.com](mailto:rox.pollard@colliers.com)

# PROPERTY INFORMATION

**Description:**

High Pointe Center has been purchased by Stars and Strikes Family Entertainment Center. The renovations have been recently completed and has created a family-oriented, attractive and vibrant atmosphere for the center, which is:

- Centrally-located on Lake Murray Boulevard just off of I-26.
- Readily accessible to the entire Columbia MSA in one of the most desired areas in Irmo.
- Unparalleled with daily automobile traffic counts.
- Less than 2 miles from Columbiana Mall –THE major retail destination in the Columbia MSA.

Stars and Strikes occupies 50,000 square feet in the center with their unique mix of family-oriented bowling, arcade games, laser tag and more- now open. Several shop spaces are available for lease with excellent visibility to Lake Murray Boulevard.

**Traffic Counts I-26:**

85,700 VPD. Connects northwest portions of Columbia MSA to downtown and to I-20 (major east/west connection). This location on I-26 is 6.5 miles from the intersection of I-26 and I-20 and is known as the cross roads of South Carolina and has 151,150 people within 15 minutes.

**Traffic Counts Lake Murray Blvd (Hwy 6):**

24,600 VPD. Highway 60 was widened from two lanes to four lanes in 2000 to accommodate the explosive growth of Irmo. These road improvements relocated traffic from heavily congested Harbison Blvd and connected/allowed for the explosive residential growth on the east and west sides of I-26.



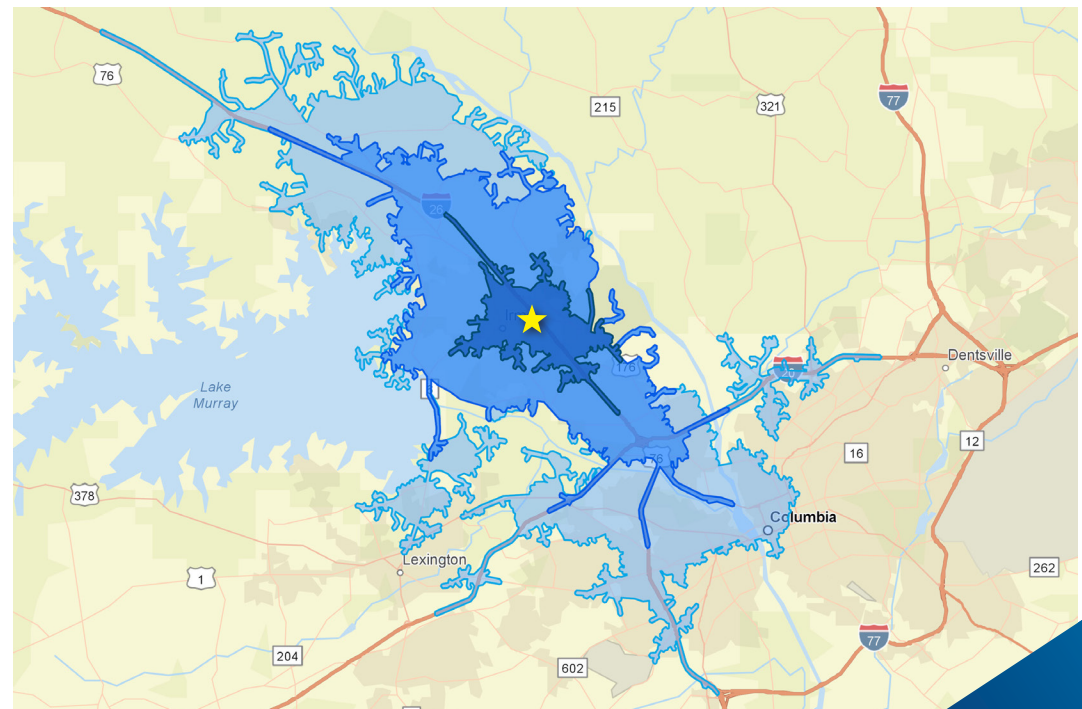
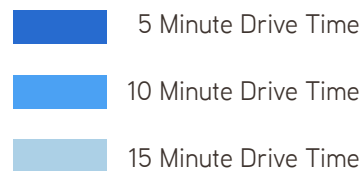
## AREA INFORMATION

Irmo was recognized in 2018 as “One of the Safest Cities” in South Carolina” and by Money Magazine in 2007 as the 12th “Most Affordable Place to Live in the Country.” Located off the shore of Lake Murray and only ten miles from Columbia, the capital of South Carolina, Irmo was a sleepy little town of 500 people in the early 1970s. Today with more than 13,000 residents Irmo is one of the country’s most sought-after places to live. (Source: © 2020 Town of Irmo, South Carolina)

District Five encompasses a land area of approximately 196 square miles, approximately one-half of which is situated in each of Lexington and Richland Counties. The school district consists of the northern portion of Lexington County lying north of Lake Murray and the Saluda River and the northwestern portion of Richland County lying south of the Broad River. The school district has three attendance areas: Chapin, Dutch Fork, and Irmo. District Five operates a total of 12 elementary schools, two intermediate schools, three middle schools, four high schools, one Center for Advanced Technical Studies and one alternative school. (Source: School District Five of Lexington & Richland Counties)

## DEMOGRAPHIC OVERVIEW

2020 STATISTICS	5 MIN	10 MIN	15 MIN
Population	18,172	88,564	171,580
Daytime Population	23,441	91,154	204,230
Households	7,870	35,788	71,127
Avg. Household Income	\$71,170	\$78,063	\$76,464





## CLOSE UP AERIAL





# PROPERTY SITE PLAN

## Current Square Footage & Availability

800	41,435 SF	Stars & Strikes
A/B	3,150 SF	Groucho's
C	1,200 SF	AVAILABLE
D	1,200 SF	AVAILABLE
E	1,200 SF	Papa John's
F	1,200 SF	AVAILABLE
G	1,200 SF	AVAILABLE
H	1,200 SF	Wild Birds Unlimited
I	1,500 SF	Tripp's Cleaner
J	8,550 SF	Stars & Strikes
K	100 SF	ATM-BAC
TOTAL	61,935 SF	





# PROPERTY PHOTOS

Colliers





#### CONTACT DETAILS

MAIN +1 803 254 2300

Colliers International  
1301 Gervais Street, Suite 600  
Columbia, SC 29201

[www.colliers.com](http://www.colliers.com)

Accelerating success.